

Annual 2023 Surface Soil Sampling Program



BWXT Nuclear Energy Canada Inc.
1160 Monaghan Road
Peterborough, ON K9J 3V6

October 11, 2023
02305778.000

Prepared for: BWXT Nuclear Energy Canada Inc.

Prepared by:



Brian J. Schuyler, C.E.T.
Team Lead - Environment

Approved by:



Brian R. Grant, P.Eng.
Senior Engineer - Environment

Production team

Englobe Corp.

Project manager	Brian J. Schuyler, C.E.T.
Mapping/GIS	Joven Mendoza
Technical review	Brian R. Grant, P. Eng
Revision and publishing	Brian J. Schuyler, C.E.T.

Revisions and publications log

Revision No.	Date	D
0A	September 27, 2023	Draft Report for the Client
00	October 11, 2023	Final Report for the Client

Distribution

PDF copy	Ms. Rebecca Parker
----------	--------------------

Executive Summary

Englobe Corp. (Englobe) was retained by BWXT Nuclear Energy Canada Inc. (BWXT) to complete the Annual 2023 Surface Soil Sampling Program for the BWXT Peterborough facility located at 1160 Monaghan Road in Peterborough, Ontario (herein referred to as the “Site”).

The Canadian Nuclear Safety Commission (CNSC), who are the nuclear regulator in Canada, initiated an Independent Environmental Monitoring Program (IEMP) for the Site in 2014. This IEMP conducted by the CNSC has included the sampling of soil, water and air in the vicinity of the Site, at various parks throughout Peterborough, at a public school in close proximity to the Site, and at a background location removed from the Site.

Beginning in 2020, BWXT has retained a third-party consultant to conduct their annual surface soil sampling program. As part of this program, surface soil samples have been collected from locations previously established and sampled by CNSC as part of the IEMP and submitted for analysis of beryllium. In 2021, uranium was added to the annual surface soil sampling program.

Similar to annual surface soil sampling programs from 2020 to 2022, the results of the annual 2023 surface soil sampling program were compared to MECP most stringent Site Condition Standards, Table 1: Full Depth Background Site Condition Standards set out in O. Reg. 153/04 (as amended).

The analytical results for beryllium and uranium for all soil samples collected and analyzed in the annual 2023 surface soil sampling program indicate concentrations well below the most stringent Site Condition Standards in MECP Table 1: Full Depth Background Site Condition Standards for Residential, Parkland, Institutional, Industrial, Commercial, and Community Property Uses.

The 2023 concentrations for beryllium and uranium are comparable to those measured from 2020 to 2022.

Based on the results of the annual 2023 surface soil sampling program, there is no evidence that beryllium or uranium used at the BWXT facility have impacted soils in the specified testing areas.

Property and Confidentiality

This report can only be used for the purposes stated therein. Any use of the report must take into consideration the object and scope of the mandate by virtue of which the report was prepared, as well as the limitations and conditions specified therein and the state of scientific knowledge at the time the report was prepared. Englobe Corp. provides no warranty and makes no representations other than those expressly contained in the report.

This document is the work product of Englobe Corp. Any reproduction, distribution or adaptation, partial or total, is strictly forbidden without the prior written authorization of Englobe Corp. and its Client. For greater certainty, use of any and all extracts from the report is strictly forbidden without the written authorization of Englobe Corp. and its Client, given that the report must be read and considered in its entirety.

No information contained in this report can be used by any third party without the prior written authorization of Englobe Corp. and its Client. Englobe Corp. disclaims any responsibility or liability for any unauthorized reproduction, distribution, adaptation or use of the report.

If tests have been carried out, the results of these tests are valid only for the sample described in this report.

Englobe Corp.'s subcontractors who have carried out on-site or laboratory work are duly assessed according to the purchase procedure of our quality system. For further information, please contact your project manager.

Table of Contents

1	Introduction	1
1.1	Background	1
2	Scope of Work	1
3	Assessment Criteria	2
4	Sampling Methodology	2
4.1	Analytical Method Reference EPA 6050 (mod)	3
4.2	QA/QC	4
5	Evaluation of Results	4
5.1	Soil Quality	4
5.2	QA/QC	4
6	Conclusion	4
7	Statement of Limitations	5
8	References	7

FIGURES

- Figure 1 Peterborough Sampling Locations
- Figure 1A R. A. Morrow Memorial Park Sampling Location
- Figure 1B Turner Park Sampling Location
- Figure 1C Kinsmen Park / Prince of Wales School / Sherbrooke Park Sampling Locations
- Figure 1D Del Cray Park Sampling Location
- Figure 1E Victoria Park Sampling Location
- Figure 1F Bonnerworth Park Sampling Location
- Figure 2 Emily-Omemee Community Centre Park Background Sampling Locations

TABLES (IN TEXT)

- Table 4.1 Summary of Sample Locations and UTM Coordinates

APPENDICES

- Appendix A Surface Soil Analytical Results
- Appendix B Laboratory Certificate of Analysis

1 Introduction

Englobe Corp. (Englobe) was retained by BWXT Nuclear Energy Canada Inc. (BWXT) to complete the Annual 2023 Surface Soil Sampling Program for the BWXT Peterborough facility located at 1160 Monaghan Road in Peterborough, Ontario (herein referred to as the “Site”).

1.1 Background

The Canadian Nuclear Safety Commission (CNSC), who are the nuclear regulator in Canada, initiated an Independent Environmental Monitoring Program (IEMP) for the Site in 2014. This IEMP conducted by the CNSC has included the sampling of soil, water and air in the vicinity of the Site, at various parks throughout Peterborough, at a public school in close proximity to the Site, and at a background location removed from the Site.

Beginning in 2020, BWXT retained a third-party consultant to conduct their annual surface soil sampling program. As part of this program, surface soil samples have been collected from locations previously established and sampled by CNSC as part of the IEMP and submitted for analysis of beryllium. In 2021, uranium was added to the annual surface soil sampling program in addition to beryllium.

To date, all results collected in the annual surface soil sampling program have been well below the Ministry of the Environment, Conservation and Parks (MECP) most stringent Site Condition Standards, Table 1: Full Depth Background Site Condition Standards), O. Reg. 153/04 (as amended).

2 Scope of Work

A requirement of BWXT’s operating license, they are required to conduct monitoring to ensure the protection of the health and safety of the public and the natural environment. BWXT has developed their own comprehensive environmental protection program to monitor and control nuclear and hazardous substance release from their facility.

During BWXT’s license renewal application, and review of the supporting documents, CNSC requested that beryllium and uranium analysis be completed for all future annual surface soil sampling programs.

The scope of work in 2023 remained the same as the 2022 program, and included the following:

- Prepared a site-specific Health & Safety Plan (HASP);
- Collected eight (8) surface soil samples in parks around Peterborough (samples GP01-S01, GP02-S02, GP03-S03, GP04-S04, GP06-S06, GP07-S07, and GP08-S08) and at local Prince of Wales Public School (GP05-S05);
- Collected three (3) background surface soil samples (GP11-S11, GP12-S12, and GP13-S13) at a location (Emily-Omemee Community Centre Park) approximately 19 kilometres west of the BWXT facility;
- Collected two (2) blind duplicate quality control/quality assurance (QA/QC) samples (GP20-S20 and GP21-S21);

- Collected surface soil samples using the previous sampling methodology that was established during the 2020 surface soil sampling program; and,
- Prepared a report summarizing the analytical results of the 2023 sampling in comparison to the MECP Table 1: Full Depth Background Site Condition Standards. A comparison of historical results was also compiled.

3 Assessment Criteria

Similar to annual surface soil sampling programs from 2020 to 2022, the results of the annual 2023 surface soil sampling program were compared to MECP most stringent Site Condition Standards, Table 1: Full Depth Background Site Condition Standards set out in O. Reg. 153/04 (as amended).

4 Sampling Methodology

The sampling methodology is based on the MECP “Guidelines on Sampling and Analytical Methods for Use at Contaminated Sites in Ontario”, revised December 1996. There is typically a high degree of small-scale variability encountered in most soils. It is strongly recommended that soil sampling for analysis of potential contaminants, other than volatile organics should be conducted by combining a number of samples from the depth of interest into one sample that is representative of both the identifiable sampling site and the depth increment (MECP, 1996). This composite sampling method was established in the 2020 surface soil sampling program. This same composite sampling methodology was used by Englobe during the annual 2023 surface soil sampling program.

The sample locations and coordinates previously established are provided in Table 4-1. The sampling locations are provided in Figures 1, 1A, 1B, 1C, 1D, 1E, 1F, and 2.

Table 4.1: Summary of Sample Locations and UTM Coordinates

Sample ID	Location	UTM Coordinates (Zone 17T)
GP01-S01	R.A. Morrow Memorial Park	713991 m E, 4907322 m N
GP02-S02	Turner Park	712587 m E, 4907662 m N
GP03-S03	Kinsmen Park	712012 m E, 4908150 m N
GP04-S04	Del Crary Park	713940 m E, 4908177 m N
GP05-S05	Prince of Wales School	712521 m E, 4908271 m N
GP06-S06	Sherbrooke Park	712780 m E, 4908463 m N
GP07-S07	Victoria Park	713953 m E, 4909512 m N
GP08-S08	Bonnerworth Park	712305 m E, 4909533 m N
GP11-S11	Emily-Omemee Community Centre Park	694043 m E, 4909939 m N
GP12-S12	Emily-Omemee Community Centre Park	694082 m E, 4909962 m N
GP13-S13	Emily-Omemee Community Centre Park	694140 m E, 4909967 m N
GP20-S20	Turner Park	Duplicate of GP02-S02
GP21-S21	Emily-Omemee Community Centre Park	Duplicate of GP12-S12

Prior to sampling, access to the properties for sampling purposes was obtained by BWXT by contacting the City of Peterborough, City of Kawartha Lakes, and the Prince of Wales School.

All sample locations were in grass covered areas. The following sampling methodology was developed in 2020 and used for the annual 2023 surface soil sampling program.

- The sampling location was confirmed using a hand-held GPS receiver using previously established sampling location coordinates;
- The sampling location was cleared of debris, if present (i.e. grass roots, stones, other materials) to allow sample collection;
- Four (4) discrete samples of surface soil (0-5 cm in depth) were collected at the four (4) cardinal directions (i.e. north, south, west, east), within a 50 cm radius of each predetermined sample location using a stainless-steel trowel;
- These discrete samples were placed onto a clean steel sample tray contained within a large Ziploc® bag and was mixed with a stainless-steel spoon. Once thoroughly mixed, the composite sample was placed into a laboratory provided 250 mL clear glass sample container. Any excess soil was placed back into the sample divots and was topped with any of the grass that was removed;
- New nitrile gloves were worn by Englobe staff at each sampling location and used gloves were discarded after sample collection;
- Soil samples were placed into a cooler with ice after sample collection to initiate cooling for transport to the laboratory for analysis;
- The sample trowel, spoon and sample tray were cleaned between sampling locations by spraying with an Alconox® soap and water solution and then distilled water dispensed from spray bottles, then wiped clean with new paper towel. Once confirmed to contain no soil residue, these sampling tools were placed into a new Ziploc® bag for transport to the next sample location; and
- The spent Ziploc® bags were discarded along with any soiled paper towels and nitrile gloves into a garbage bag.

4.1 Analytical Method Reference EPA 6050 (mod)

The analytical method reference and laboratory used in the annual 2023 surface soil sampling program remained the same from the 2020 to 2022 programs.

As included in the ALS Canada Ltd. (ALS) of Waterloo, Ontario work order WT2326349 quality control interpretive report included in Appendix B, the method reference used for metals in soil is EPA 6020B (mod).

The preparation of each sample included drying each sample, then sieved through a 2 mm sieve, digested with HNO₃ and HCL to liberate metals that may be environmentally available.

The analysis was completed by collision reaction cell (CRC) inductively coupled plasma-mass spectrometry (ICP-MS).

The analysis by ALS was completed in accordance with the MECP “Protocol for Analytical Methods Used in the Assessment of Properties Under Part XV.1 of the Environmental Protection Act”, July 1, 2011.

4.2 QA/QC

ALS implemented internal laboratory protocols, including method blanks, duplicates, laboratory control sample, and surrogate recoveries, to assess the precision and accuracy of the analytical data.

The analysis by ALS was completed in accordance with the MECP “Protocol for Analytical Methods Used in the Assessment of Properties Under Part XV.1 of the Environmental Protection Act”, July 1, 2011.

Two (2) blind duplicate samples (GP20-S20 and GP21-S21) were collected by Englobe to assess the potential variability in the samples and to assess the accuracy of the laboratory.

Three (3) background surface soil samples (GP11-S11, GP12-S12 and GP13-S13) were collected from a location approximately 19 kilometres west of BWXT and are anticipated to represent Ontario background levels for beryllium and uranium.

A copy of the laboratory report is included in Appendix B.

5 Evaluation of Results

5.1 Soil Quality

The analytical results for beryllium and uranium for all soil samples collected and analyzed in the annual 2023 surface soil sampling program are well below the most stringent Site Condition Standards in MECP Table 1: Full Depth Background Site Condition Standards for Residential, Parkland, Institutional, Industrial, Commercial, and community Property Uses.

5.2 QA/QC

All samples were evaluated within their respective holding time and the quality control lot met ALS laboratory Data Quality Objectives.

A review of blind duplicate samples indicates a good correlation between the original sample and the duplicate sample.

A review of the laboratory QA/QC indicates that there were no issues identified that would have a material effect on the conclusions of this report.

6 Conclusion

The analytical results for beryllium and uranium for all soil samples collected and analyzed in the annual 2023 surface soil sampling program indicate concentrations well below the most stringent Site Condition Standards in MECP Table 1: Full Depth Background Site Condition Standards for Residential, Parkland, Institutional, Industrial, Commercial, and community Property Uses.

The 2023 concentrations for beryllium and uranium are comparable to those measured in previous years from 2020 to 2022.

Based on the results of the annual 2023 surface soil sampling program, there is no evidence that beryllium or uranium used at the BWXT facility have impacted soils in the specified testing areas.

7 Statement of Limitations

This report (hereinafter, the “Report”) was prepared by Englobe Corp (hereinafter the “Company”) and is provided for the sole and exclusive use and benefit of BWXT Nuclear Energy Canada Inc. (the “Client”). Ownership in and copyright for the contents of the Report belong to the Company.

No other person is authorized to rely on, use, copy, duplicate, reproduce or disseminate this Report, in whole or in part and for any reason whatsoever, without the express prior written consent of the Company. Any person using this Report, other than the person(s) to whom it is directly addressed, does so entirely at its own risk. The Company assumes no responsibility or liability in connection with decisions made or actions taken based on the Report, or the observations and/or comments contained within the Report. Others with interest in the site and/or subject matter of this Report should undertake their own investigations and studies to determine how or if they or their plans could be affected.

This Report should be considered in its entirety; selecting specific portions of the Report may result in the misinterpretation of the content.

The work performed by the Company was carried out in accordance with the terms and conditions specified in the Professional Services Agreement between the Company and the Client, in accordance with currently accepted engineering standards and practices and in a manner consistent with the level of skill, care and competence ordinarily exercised by members of the same profession currently practicing under similar conditions and like circumstances in the same jurisdiction in which the services were provided. Standards, guidelines, and practices may change over time; those which were applied to produce this Report may be obsolete or unacceptable at a later date.

The findings, recommendations, suggestions, or opinions expressed in this Report reflect the Company’s best professional judgment based on observations and/or information reasonably available at the time the work was performed, as appropriate for the scope, work schedule and budgetary constraints established by the Client. No other warranty or representation, expressed or implied, is included in this Report including, but not limited to, that the Report deals with all issues potentially applicable to the site and/or that the Report deals with any and all of the important features of the site, except as expressly provided in the scope of work.

This Report has been prepared for the specific site, development, building, design or building assessment objectives and/or purposes that were described to the Company by the Client. The applicability and reliability of the content of this Report, subject to the limitations provided herein, are only valid to the extent that there has been no material alteration or variation thereto, and the Company expressly disclaims any obligation to update the Report. However, the Company reserves the right to amend or supplement this Report based on additional information, documentation or evidence made available to it.

The Company makes no representation concerning the legal significance of its findings, nor as to the present or future value of the property, or its fitness for a particular purpose and hereby disclaims any responsibility or liability for consequential financial effects on transactions or property values, or requirements for follow-up actions and costs.

Since the passage of time, natural occurrences, and direct or indirect human intervention may affect the views, conclusions, and recommendations (if any) provided in this Report, it is intended for immediate use.

This Statement of Limitations forms an integral part of the Report.

In preparing this Report, the Company has relied in good faith on information provided by others and has assumed that such information is factual, accurate and complete. The Company accepts no responsibility or liability for any deficiency, misstatement or inaccuracy in the Report resulting from the information provided, concealed, or not fully disclosed by those individuals.

The conclusions presented herein are based on information gathered from a limited historical review of readily available geological, historical, and regulatory information and a field surface soil sampling program at specific pre-established locations. Consequently, the presence and/or extent of any adverse environmental impact is an opinion that has been arrived at within the scope of this assessment.

The assessment should not be considered a comprehensive audit that covers and eliminates all present, past, and future risks. The information presented in this Report is based on data collected during the completion of the field sampling conducted. The overall subsurface conditions were extrapolated based on information collected at specific sampling locations. Professional judgement was exercised in gathering and analyzing data; however, no monitoring method can completely eliminate the possibility of obtaining partially imprecise or incomplete information; it can only reduce the possibility to an acceptable level. Consequently, the actual subsurface conditions between the sampling points may vary. In addition, analysis has been carried out only for the chemical and physical parameters identified, and it should not be inferred that other chemical species or physical conditions are not present.

Any description of the site and its physical setting documents in the Report is presented for information purposes only, to provide the reader a better understanding of the site and scope of work.

Any results from laboratory or other subcontractors reported herein have been carried out by others, and the Company cannot warrant their accuracy.

8 References

Canadian Nuclear Safety Commission, 2023: Independent Environmental Monitoring Program, BWXT Nuclear Energy Canada Inc., Peterborough, modified 2023-09-15, <https://nuclearsafety.gc.ca/eng/resources/maps-of-nuclear-facilities/iemp/bwxt-peterborough.cfm>.

Canadian Nuclear Safety Commission, 2023: Nuclear Facility - BWXT Nuclear Energy Canada Inc. - Peterborough, modified 2023-09-15, [Nuclear Facility - BWXT Nuclear Energy Canada Inc. - Peterborough - Canadian Nuclear Safety Commission](#).

Englobe Corp., 2022: Annual 2022 Surface Soil Sampling Program, 1160 Monaghan Road, Peterborough, ON, December 21, 2022.

Ministry of the Environment, Conservation and Parks, 2011: Soil, Ground Water and Sediment Standards for Use Under Part XV.1 of the Environmental Protection Act, O. Reg. 153/04 (as amended), April 15, 2011.

Ministry of the Environment, Conservation and Parks, 2004: Protocol for Analytical Methods Used in the Assessment of Properties Under Part XV.1 of the Environmental Protection Act, March 4, amended July 1, 2011.

Ministry of the Environment, Conservation and Parks, 1996: Guidelines on Sampling and Analytical Methods for Use at Contaminated Sites in Ontario, December 1996.

SDK Environmental Consulting & Services, 2021: Annual 2021 Soil Siltation Sampling Program, BWXT Nuclear Energy Canada Inc. Peterborough Facility, Project P1236, September 21, 2021.

Figures

Figure 1: Peterborough Sampling Locations

Figure 1A: R.A. Morrow Memorial Park Sampling Locations

Figure 1B: Turner Park Sampling Locations

Figure 1C: Kinsmen Park / Prince of Wales School / Sherbrooke Park
Sampling Locations

Figure 1D: Del Crary Park Sampling Location

Figure 1E: Victoria Park Sampling Location

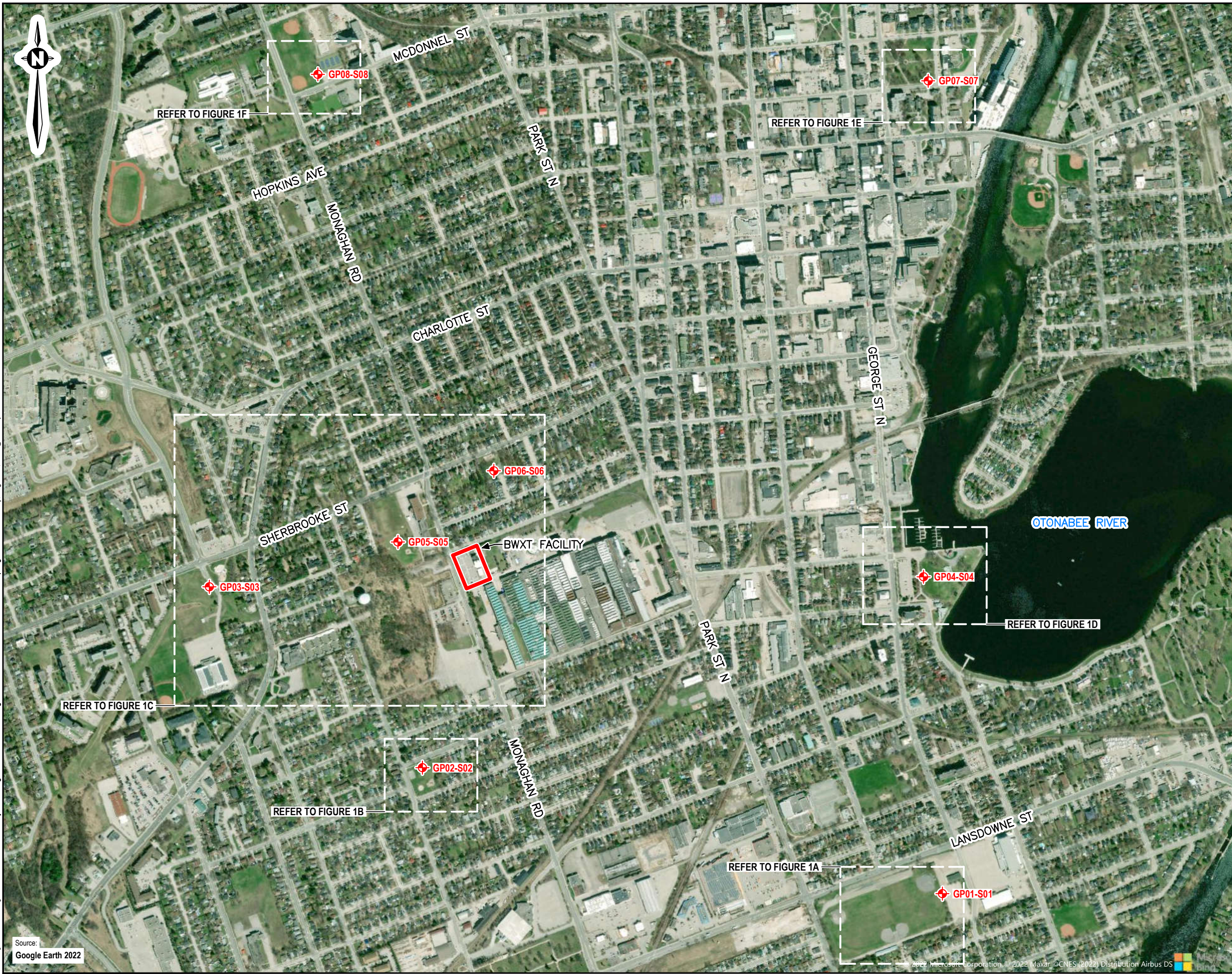
Figure 1F: Bonnerworth Park Sampling Locations

Figure 2: Emily-Omemee Community Centre Park Background
Sampling Locations



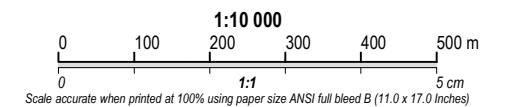


Folder: L:\TSCAD\Projects\Vantage Point\02205691 Monaghan Rd\2022 Annual Soil Surface Soil Sampling\DWGs
 Tuesday, August 23, 2022 @ 16:41 by Joven Mendoza
 Drawing: 1 Site Plan.dwg
 Source: Google Earth 2022



Note
 1. This drawing shall be read in conjunction with the associated technical report.

Legend
 Surface Soil Sample Location
 BWXT Facility Location



A	2022/08/23	Preliminary	
Revision	Date	Issue	Approval

Client
BWXT Nuclear Energy Canada Inc.

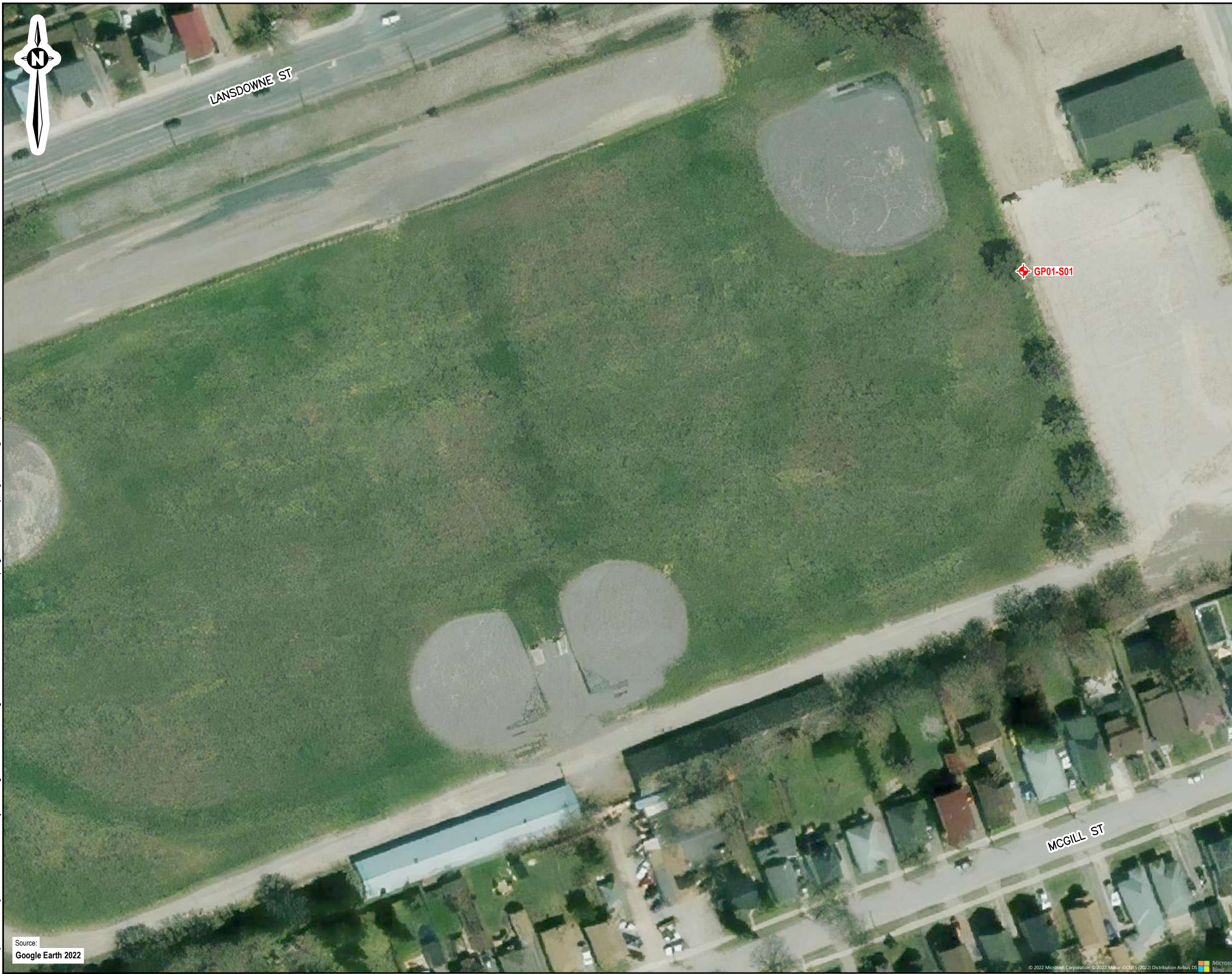
Site
1160 Monaghan Road, Peterborough, ON

Report Title
Annual Surface Soil Sampling Program

Drawing Title
Peterborough Sampling Locations

Designed By	BS	Scale	As shown
Drawn By	JM	Date	October 2023
Approved By	BG	Project No.	02305778.000

Figure No. **1**

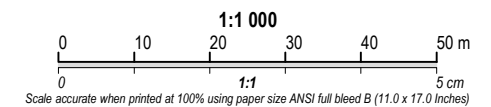


Note

1. This drawing shall be read in conjunction with the associated technical report.

Legend

- Surface Soil Sample Location



A	2022/08/23	Preliminary	
Revision	Date	Issue	Approval

Client
BWXT Nuclear Energy Canada Inc.

Site
1160 Monaghan Road, Peterborough, ON

Report Title
Annual Surface Soil Sampling Program

Drawing Title
R. A. Morrow Memorial Park Sampling Location

Designed By	BS	Scale	As shown
Drawn By	JM	Date	October 2023
Approved By	BG	Project No.	02305778.000

Figure No. **1A**

Drawing: 1 Site Plan.dwg
 Folder: L:\ITS\CAD\Projects\Vantage Point\02205691 Monaghan Rd\2022 Annual Soil Surface Soil Sampling\DWGs
 Tuesday, August 23, 2022 @ 16:41 by Joven Mendoza

Source:
Google Earth 2022



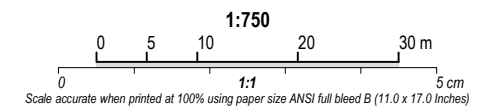
Note

1. This drawing shall be read in conjunction with the associated technical report.

Legend

-  Surface Soil Sample Location

 GP02-S02



A	2022/08/23	Preliminary	
Revision	Date	Issue	Approval

Client
BWXT Nuclear Energy Canada Inc.

Site
1160 Monaghan Road, Peterborough, ON

Report Title
Annual Surface Soil Sampling Program

Drawing Title
Turner Park Sampling Location

Designed By	BS	Scale	As shown
-------------	-----------	-------	-----------------

Drawn By	JM	Date	October 2023
----------	-----------	------	---------------------

Approved By	BG	Project No.	02305778.000
-------------	-----------	-------------	---------------------

Figure No. **1B**

Drawing: 1 Site Plan.dwg Folder: L:\ITS\CAD\Projects\Vantage_Point\02205681 Monaghan Rd\2022 Annual Soil Surface Soil Sampling\DWGs Tuesday, August 23, 2022 @ 16:41 by Joven Mendoza

Source:
Google Earth 2022



Drawing: 1 Site Plan.dwg
 Folder: L:\ITS\CAD\Projects\Vantage Point\02205691 Monaghan Rd\2022 Annual Soil Surface Soil Sampling\DWGs
 Tuesday, August 23, 2022 @ 16:41 by Joven Mendoza

Source:
Google Earth 2022

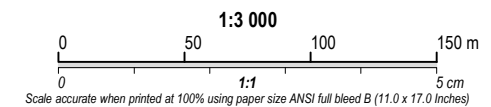


Note

1. This drawing shall be read in conjunction with the associated technical report.

Legend

- Surface Soil Sample Location
- BWXT Facility Location



A	2022/08/23	Preliminary	
Revision	Date	Issue	Approval

Client
BWXT Nuclear Energy Canada Inc.

Site
1160 Monaghan Road, Peterborough, ON

Report Title
Annual Surface Soil Sampling Program

Drawing Title
**Kinsmen Park / Prince of Wales School
Sherbrooke Park Sampling Location**

Designed By	BS	Scale	As shown
Drawn By	JM	Date	October 2023
Approved By	BG	Project No.	02305778.000

Figure No. **1C**

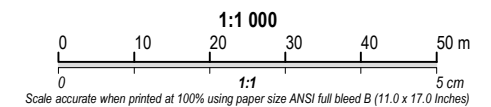


Note

1. This drawing shall be read in conjunction with the associated technical report.

Legend

- Surface Soil Sample Location



A	2022/08/23	Preliminary	
Revision	Date	Issue	Approval

Client
BWXT Nuclear Energy Canada Inc.

Site
1160 Monaghan Road, Peterborough, ON

Report Title
Annual Surface Soil Sampling Program

Drawing Title
Del Cray Park Sampling Location

Designed By	BS	Scale	As shown
Drawn By	JM	Date	October 2023
Approved By	BG	Project No.	02305778.000

Figure No. **1D**

Drawing: 1 Site Plan.dwg Folder: L:\TSCAD\Projects\Vantage Point\02205691 Monaghan Rd\2022 Annual Soil Surface Soil Sampling\DWGs Tuesday, August 23, 2022 @ 16:41 by Joven Mendoza

Source:
Google Earth 2022

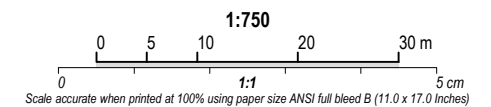


Note

1. This drawing shall be read in conjunction with the associated technical report.

Legend

- Surface Soil Sample Location



A	2022/08/23	Preliminary	
Revision	Date	Issue	Approval

Client
BWXT Nuclear Energy Canada Inc.

Site
1160 Monaghan Road, Peterborough, ON

Report Title
Annual Surface Soil Sampling Program

Drawing Title
Victoria Park Sampling Location

Designed By	BS	Scale	As shown
Drawn By	JM	Date	October 2023
Approved By	BG	Project No.	02305778.000

Figure No. **1E**

Drawing: 1 Site Plan.dwg Folder: L:\ITS\CAD\Projects\Vantage Point\02205691 Monaghan Rd\2022 Annual Soil Surface Soil Sampling\DWGs Tuesday, August 23, 2022 @ 16:41 by Joven Mendoza

Source:
Google Earth 2022

© 2022 Microsoft Corporation © 2022 Maxar © CNES (2022) Distribution Airbus DS

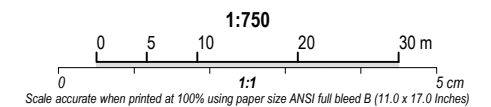


Note

1. This drawing shall be read in conjunction with the associated technical report.

Legend

- Surface Soil Sample Location



A	2022/08/23	Preliminary	
Revision	Date	Issue	Approval

Client
BWXT Nuclear Energy Canada Inc.

Site
1160 Monaghan Road, Peterborough, ON

Report Title
Annual Surface Soil Sampling Program

Drawing Title
Bonnerworth Park Sampling Location

Designed By	BS	Scale	As shown
-------------	-----------	-------	-----------------

Drawn By	JM	Date	October 2023
----------	-----------	------	---------------------

Approved By	BG	Project No.	02305778.000
-------------	-----------	-------------	---------------------

Figure No. **1F**

Drawing: 1 Site Plan.dwg
 Folder: L:\ITS\CAD\Projects\Vantage Point\02205691 Monaghan Rd\2022 Annual Soil Surface Soil Sampling\DWGs
 Tuesday, August 23, 2022 @ 16:41 by Joven Mendoza

Source:
Google Earth 2022

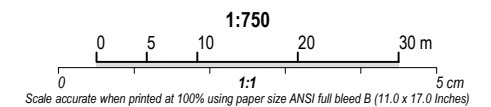


Note

1. This drawing shall be read in conjunction with the associated technical report.

Legend

-  Surface Soil Sample Location



A	2022/08/23	Preliminary	
Revision	Date	Issue	Approval

Client
BWXT Nuclear Energy Canada Inc.

Site
1160 Monaghan Road, Peterborough, ON

Report Title
Annual Surface Soil Sampling Program


Drawing Title
**Emily-Omemee Community Centre Park
Background Sampling Locations**

Designed By	BS	Scale	As shown
Drawn By	JM	Date	October 2023
Approved By	BG	Project No.	02305778.000

Figure No. **2**

Drawing: 1 Site Plan.dwg Folder: L:\ITS\CAD\Projects\Vantage Point\02205691 Monaghan Rd\2022 Annual Soil Surface Soil Sampling\DWGs Tuesday, August 23, 2022 @ 16:41 by Joven Mendoza

Source:
Google Earth 2022

© 2022 Microsoft Corporation © 2022 Maxar © CNES (2022) Distribution Airbus DS 

Appendix A

Surface Soil Analytical Results

Table 1: 2023 Surface Soil Sampling Results - Beryllium

Table 2: 2023 Surface Soil Sampling Results - Uranium



eNGLOBE

Table 1
2023 Surface Soil Sampling Results - Beryllium
BWXT - Peterborough, Ontario

Sample ID	Sample Location	Property Use	MECP Table 1 SCS (µg/g)	2020	2021	2022	2023
GP01-S01	R.A. Morrow Memorial Park	Parkland	2.5	<0.50	<0.50	<0.50	<0.50
GP02-S02	Turner Park	Parkland	2.5	<0.50	<0.50	<0.50	<0.50
GP03-S03	Kinsmen Park	Parkland	2.5	<0.50	<0.50	<0.50	<0.50
GP04-S04	Del Crary Park	Parkland	2.5	<0.50	<0.50	<0.50	<0.50
GP05-S05	Prince of Wales School	Institutional	2.5	0.50	<0.50	<0.50	<0.50
GP06-S06	Park on Adeline St. off Patterson St.	Parkland	2.5	0.52	0.55	0.53	0.56
GP07-S07	Victoria Park	Parkland	2.5	<0.50	<0.50	<0.50	<0.50
GP08-S08	Bonnerworth Park	Parkland	2.5	<0.50	<0.50	<0.50	0.52
GP11-S11	Emily-Omemee Park	Parkland	2.5	<0.50	<0.50	<0.50	<0.50
GP12-S12	Emily-Omemee Park	Parkland	2.5	<0.50	<0.50	<0.50	<0.50
GP13-S13	Emily-Omemee Park	Parkland	2.5	<0.50	<0.50	<0.50	<0.50
GP20-S20	Duplicate of GP02-S02	Parkland	2.5	<0.50	<0.50	<0.50	<0.50
GP21-S21	Duplicate of GP12-S12	Parkland	2.5	<0.50	<0.50	<0.50	<0.50

Notes

All results expressed as µg/g.

NV	No Criteria/RDL Value
NA	Not Applicable
<	Value is less than the Reported Detection Limit (RDL)
MECP	Soil, Ground Water and Sediment Standards for use Under Part XV.1 of the Environmental Protection Act (MECP 2011), Table 1: Full Depth Background Site Condition Standards for Residential, Parkland, Institutional, Industrial, Commercial, Community Property Use.
Yellow Highlight	Exceeds Table 1 Site Condition Standards

Table 2
2023 Surface Soil Sampling Results - Uranium
BWXT - Peterborough, Ontario

Sample ID	Sample Location	Property Use	MECP Table 1 SCS (µg/g)	2021	2022	2023
GP01-S01	R.A. Morrow Memorial Park	Parkland	2.5	<1.0	<1.0	<1.0
GP02-S02	Turner Park	Parkland	2.5	<1.0	<1.0	<1.0
GP03-S03	Kinsmen Park	Parkland	2.5	<1.0	<1.0	<1.0
GP04-S04	Del Crary Park	Parkland	2.5	<1.0	<1.0	<1.0
GP05-S05	Prince of Wales School	Institutional	2.5	<1.0	<1.0	<1.0
GP06-S06	Park on Adeline St. off Patterson St.	Parkland	2.5	<1.0	<1.0	<1.0
GP07-S07	Victoria Park	Parkland	2.5	<1.0	<1.0	<1.0
GP08-S08	Bonnerworth Park	Parkland	2.5	1.0	<1.0	<1.0
GP11-S11	Emily-Omemee Park	Parkland	2.5	<1.0	<1.0	<1.0
GP12-S12	Emily-Omemee Park	Parkland	2.5	<1.0	<1.0	<1.0
GP13-S13	Emily-Omemee Park	Parkland	2.5	<1.0	<1.0	<1.0
GP20-S20	Duplicate of GP02-S02	Parkland	2.5	<1.0	<1.0	<1.0
GP21-S21	Duplicate of GP12-S12	Parkland	2.5	<1.0	<1.0	<1.0

Notes

All results expressed as µg/g.

NV	No Criteria/RDL Value
NA	Not Applicable
<	Value is less than the RDL
MECP	Soil, Ground Water and Sediment Standards for use Under Part XV.1 of the Environmental Protection Act (MECP 2011), Table 1: Full Depth Background Site Condition Standards for Residential, Parkland, Institutional, Industrial, Commercial, Community Property Use.
Yellow Highlight	Exceeds Table 1 Site Condition Standards

Appendix B

Laboratory Certificate of Analysis



eNGLOBE



CERTIFICATE OF ANALYSIS (GUIDELINE EVALUATION)

<p>Work Order : WT2326349</p> <p>Amendment : 1</p> <p>Client : Englobe Corp.</p> <p>Contact : Brian Schuyler</p> <p>Address : 605 Hewitson St Thunder Bay ON Canada P7B5V5</p> <p>Telephone : 1 877 300 4800</p> <p>Project : 2305778</p> <p>PO : ----</p> <p>C-O-C number : ----</p> <p>Sampler : Client</p> <p>Site : ----</p> <p>Quote number : Standing Offer 2023</p> <p>No. of samples received : 13</p> <p>No. of samples analysed : 13</p>	<p>Page : 1 of 15</p> <p>Laboratory : ALS Environmental - Waterloo</p> <p>Account Manager : Christine Paradis</p> <p>Address : 60 Northland Road, Unit 1 Waterloo, Ontario Canada N2V 2B8</p> <p>Telephone : +1 519 886 6910</p> <p>Date Samples Received : 23-Aug-2023 10:25</p> <p>Date Analysis Commenced : 25-Aug-2023</p> <p>Issue Date : 30-Aug-2023 10:22</p>
---	--

This report supersedes any previous report(s) with this reference. Results apply to the sample(s) as submitted. This document shall not be reproduced, except in full.

This Certificate of Analysis contains the following information:

- General Comments
- Analytical Results
- Guideline Comparison

Additional information pertinent to this report will be found in the following separate attachments: Quality Control Report, QC Interpretive report to assist with Quality Review and Sample Receipt Notification (SRN).

Signatories

This document has been electronically signed by the authorized signatories below. Electronic signing is conducted in accordance with US FDA 21 CFR Part 11.

<i>Signatories</i>	<i>Position</i>	<i>Laboratory Department</i>
Greg Pokocky	Manager - Inorganics	Metals, Waterloo, Ontario

General Comments

The analytical methods used by ALS are developed using internationally recognized reference methods (where available), such as those published by US EPA, APHA Standard Methods, ASTM, ISO, Environment Canada, BC MOE, and Ontario MOE. Refer to the ALS Quality Control Interpretive report (QCI) for applicable references and methodology summaries. Reference methods may incorporate modifications to improve performance.

Where a reported less than (<) result is higher than the LOR, this may be due to primary sample extract/digestate dilution and/or insufficient sample for analysis.

Where the LOR of a reported result differs from standard LOR, this may be due to high moisture content, insufficient sample (reduced weight employed) or matrix interference.

Additional information pertinent to this report will be found in the following separate attachments: Quality Control Report, QA/QC Compliance Assessment to assist with Quality Review and Sample Receipt Notification.

When sampling time information is not provided by the client, sampling dates are shown without a time component. In these instances, the time component has been assumed by the laboratory for processing purposes.

Application of guidelines is provided "as is" without warranty of any kind, either expressed or implied, including, but not limited to fitness for a particular purpose, or non-infringement. ALS assumes no responsibility for errors or omissions in the information. Guidelines are not adjusted for the hardness, pH or temperature of the sample (the most conservative values are used). Measurement uncertainty is not applied to test results prior to comparison with specified criteria values.

Key : LOR: Limit of Reporting (detection limit).

<i>Unit</i>	<i>Description</i>
mg/kg	milligrams per kilogram

>: greater than.

<: less than.

Red shading is applied where the result or the LOR is greater than the Guideline Upper Limit (or lower than the Guideline Lower Limit, if applicable).

For drinking water samples, Red shading is applied where the result for E.coli, fecal or total coliforms is greater than or equal to the Guideline Upper Limit .

Workorder Comments

Amendment (30/08/2023): This report has been amended and re-released to allow the reporting of additional analytical data. The LORs were changed as specified.



CERTIFICATE OF ANALYSIS

<p>Work Order : WT2326349</p> <p>Amendment : 1</p> <p>Client : Englobe Corp.</p> <p>Contact : Brian Schuyler</p> <p>Address : 605 Hewitson St Thunder Bay ON Canada P7B5V5</p> <p>Telephone : 1 877 300 4800</p> <p>Project : 2305778</p> <p>PO : ----</p> <p>C-O-C number : ----</p> <p>Sampler : Client</p> <p>Site : ----</p> <p>Quote number : Standing Offer 2023</p> <p>No. of samples received : 13</p> <p>No. of samples analysed : 13</p>	<p>Page : 1 of 4</p> <p>Laboratory : ALS Environmental - Waterloo</p> <p>Account Manager : Christine Paradis</p> <p>Address : 60 Northland Road, Unit 1 Waterloo ON Canada N2V 2B8</p> <p>Telephone : +1 519 886 6910</p> <p>Date Samples Received : 23-Aug-2023 10:25</p> <p>Date Analysis Commenced : 25-Aug-2023</p> <p>Issue Date : 30-Aug-2023 10:20</p>
---	---

This report supersedes any previous report(s) with this reference. Results apply to the sample(s) as submitted. This document shall not be reproduced, except in full.

This Certificate of Analysis contains the following information:

- General Comments
- Analytical Results

Additional information pertinent to this report will be found in the following separate attachments: Quality Control Report, QC Interpretive report to assist with Quality Review and Sample Receipt Notification (SRN).

Signatories

This document has been electronically signed by the authorized signatories below. Electronic signing is conducted in accordance with US FDA 21 CFR Part 11.

<i>Signatories</i>	<i>Position</i>	<i>Laboratory Department</i>
Greg Pokocky	Manager - Inorganics	Metals, Waterloo, Ontario



General Comments

The analytical methods used by ALS are developed using internationally recognized reference methods (where available), such as those published by US EPA, APHA Standard Methods, ASTM, ISO, Environment Canada, BC MOE, and Ontario MOE. Refer to the ALS Quality Control Interpretive report (QCI) for applicable references and methodology summaries. Reference methods may incorporate modifications to improve performance.

Where a reported less than (<) result is higher than the LOR, this may be due to primary sample extract/digestate dilution and/or insufficient sample for analysis.

Where the LOR of a reported result differs from standard LOR, this may be due to high moisture content, insufficient sample (reduced weight employed) or matrix interference.

Please refer to Quality Control Interpretive report (QCI) for information regarding Holding Time compliance.

Key : CAS Number: Chemical Abstracts Services number is a unique identifier assigned to discrete substances
LOR: Limit of Reporting (detection limit).

<i>Unit</i>	<i>Description</i>
mg/kg	milligrams per kilogram

<: less than.

>: greater than.

Surrogate: An analyte that is similar in behavior to target analyte(s), but that does not occur naturally in environmental samples. For applicable tests, surrogates are added to samples prior to analysis as a check on recovery.

Test results reported relate only to the samples as received by the laboratory.

UNLESS OTHERWISE STATED on SRN or QCI Report, ALL SAMPLES WERE RECEIVED IN ACCEPTABLE CONDITION.

Workorder Comments

Amendment (30/08/2023): This report has been amended and re-released to allow the reporting of additional analytical data. The LORs were changed as specified.



Analytical Results

Sub-Matrix: Soil/Solid					Client sample ID				
(Matrix: Soil/Solid)					GP01-S01	GP02-S02	GP03-S03	GP04-S04	GP05-S05
Client sampling date / time					22-Aug-2023 00:00	22-Aug-2023 00:00	22-Aug-2023 00:00	22-Aug-2023 00:00	22-Aug-2023 00:00
Analyte	CAS Number	Method/Lab	LOR	Unit	WT2326349-001	WT2326349-002	WT2326349-003	WT2326349-004	WT2326349-005
					Result	Result	Result	Result	Result
Metals									
Beryllium	7440-41-7	E440C/WT	0.10	mg/kg	<0.50	<0.50	<0.50	<0.50	<0.50
Uranium	7440-61-1	E440C/WT	0.050	mg/kg	<1.00	<1.00	<1.00	<1.00	<1.00

Please refer to the General Comments section for an explanation of any result qualifiers detected.

Please refer to the Accreditation section for an explanation of analyte accreditations.

Analytical Results

Sub-Matrix: Soil/Solid					Client sample ID				
(Matrix: Soil/Solid)					GP06-S06	GP07-S07	GP08-S08	GP11-S11	GP12-S12
Client sampling date / time					22-Aug-2023 00:00	22-Aug-2023 00:00	22-Aug-2023 00:00	22-Aug-2023 00:00	22-Aug-2023 00:00
Analyte	CAS Number	Method/Lab	LOR	Unit	WT2326349-006	WT2326349-007	WT2326349-008	WT2326349-009	WT2326349-010
					Result	Result	Result	Result	Result
Metals									
Beryllium	7440-41-7	E440C/WT	0.10	mg/kg	0.56	<0.50	0.52	<0.50	<0.50
Uranium	7440-61-1	E440C/WT	0.050	mg/kg	<1.00	<1.00	<1.00	<1.00	<1.00

Please refer to the General Comments section for an explanation of any result qualifiers detected.

Please refer to the Accreditation section for an explanation of analyte accreditations.



Analytical Results

Sub-Matrix: Soil/Solid					Client sample ID	GP13-S13	GP20-S20	GP21-S21	----	----
(Matrix: Soil/Solid)					Client sampling date / time	22-Aug-2023 00:00	22-Aug-2023 00:00	22-Aug-2023 00:00	----	----
Analyte	CAS Number	Method/Lab	LOR	Unit	WT2326349-011	WT2326349-012	WT2326349-013	-----	-----	
Metals					Result	Result	Result	----	----	
Beryllium	7440-41-7	E440C/WT	0.10	mg/kg	<0.50	<0.50	<0.50	----	----	
Uranium	7440-61-1	E440C/WT	0.050	mg/kg	<1.00	<1.00	<1.00	----	----	

Please refer to the General Comments section for an explanation of any result qualifiers detected.

Please refer to the Accreditation section for an explanation of analyte accreditations.

QUALITY CONTROL INTERPRETIVE REPORT

<p>Work Order : WT2326349</p> <p>Amendment : 1</p> <p>Client : Englobe Corp.</p> <p>Contact : Brian Schuyler</p> <p>Address : 605 Hewitson St Thunder Bay ON Canada P7B5V5</p> <p>Telephone : 1 877 300 4800</p> <p>Project : 2305778</p> <p>PO : ----</p> <p>C-O-C number : ----</p> <p>Sampler : Client</p> <p>Site : ----</p> <p>Quote number : Standing Offer 2023</p> <p>No. of samples received : 13</p> <p>No. of samples analysed : 13</p>	<p>Page : 1 of 6</p> <p>Laboratory : ALS Environmental - Waterloo</p> <p>Account Manager : Christine Paradis</p> <p>Address : 60 Northland Road, Unit 1 Waterloo, Ontario Canada N2V 2B8</p> <p>Telephone : +1 519 886 6910</p> <p>Date Samples Received : 23-Aug-2023 10:25</p> <p>Issue Date : 30-Aug-2023 10:20</p>
---	---

This report is automatically generated by the ALS LIMS (Laboratory Information Management System) through evaluation of Quality Control (QC) results and other QA parameters associated with this submission, and is intended to facilitate rapid data validation by auditors or reviewers. The report highlights any exceptions and outliers to ALS Data Quality Objectives, provides holding time details and exceptions, summarizes QC sample frequencies, and lists applicable methodology references and summaries.

Key

- Anonymous: Refers to samples which are not part of this work order, but which formed part of the QC process lot.
- CAS Number: Chemical Abstracts Service number is a unique identifier assigned to discrete substances.
- DQO: Data Quality Objective.
- LOR: Limit of Reporting (detection limit).
- RPD: Relative Percent Difference.

Workorder Comments

Holding times are displayed as "----" if no guidance exists from CCME, Canadian provinces, or broadly recognized international references.

Summary of Outliers

Outliers : Quality Control Samples

- No Method Blank value outliers occur.
- No Duplicate outliers occur.
- No Laboratory Control Sample (LCS) outliers occur
- No Test sample Surrogate recovery outliers exist.

Outliers: Reference Material (RM) Samples

- No Reference Material (RM) Sample outliers occur.

Outliers : Analysis Holding Time Compliance (Breaches)

- No Analysis Holding Time Outliers exist.

Outliers : Frequency of Quality Control Samples

- No Quality Control Sample Frequency Outliers occur.



Analysis Holding Time Compliance

This report summarizes extraction / preparation and analysis times and compares each with ALS recommended holding times, which are selected to meet known provincial and /or federal requirements. In the absence of regulatory hold times, ALS establishes recommendations based on guidelines published by organizations such as CCME, US EPA, APHA Standard Methods, ASTM, or Environment Canada (where available). Dates and holding times reported below represent the first dates of extraction or analysis. If subsequent tests or dilutions exceeded holding times, qualifiers are added (refer to COA).

If samples are identified below as having been analyzed or extracted outside of recommended holding times, measurement uncertainties may be increased, and this should be taken into consideration when interpreting results.

Where actual sampling date is not provided on the chain of custody, the date of receipt with time at 00:00 is used for calculation purposes.

Where only the sample date without time is provided on the chain of custody, the sampling date at 00:00 is used for calculation purposes.

Matrix: Soil/Solid

Evaluation: ✖ = Holding time exceedance ; ✔ = Within Holding Time

Analyte Group Container / Client Sample ID(s)	Method	Sampling Date	Extraction / Preparation				Analysis				
			Preparation Date	Holding Times		Eval	Analysis Date	Holding Times		Eval	
				Rec	Actual			Rec	Actual		
Metals : Metals in Soil/Solid by CRC ICPMS (<355 µm)											
Glass soil jar/Teflon lined cap [ON MECP] GP21-S21	E440C	22-Aug-2023	25-Aug-2023	180 days	4 days	✔	28-Aug-2023	180 days	6 days	✔	
Metals : Metals in Soil/Solid by CRC ICPMS (<355 µm)											
Glass soil jar/Teflon lined cap [ON MECP] GP01-S01	E440C	22-Aug-2023	28-Aug-2023	180 days	6 days	✔	28-Aug-2023	180 days	6 days	✔	
Metals : Metals in Soil/Solid by CRC ICPMS (<355 µm)											
Glass soil jar/Teflon lined cap [ON MECP] GP02-S02	E440C	22-Aug-2023	28-Aug-2023	180 days	6 days	✔	28-Aug-2023	180 days	6 days	✔	
Metals : Metals in Soil/Solid by CRC ICPMS (<355 µm)											
Glass soil jar/Teflon lined cap [ON MECP] GP03-S03	E440C	22-Aug-2023	28-Aug-2023	180 days	6 days	✔	28-Aug-2023	180 days	6 days	✔	
Metals : Metals in Soil/Solid by CRC ICPMS (<355 µm)											
Glass soil jar/Teflon lined cap [ON MECP] GP04-S04	E440C	22-Aug-2023	28-Aug-2023	180 days	6 days	✔	28-Aug-2023	180 days	6 days	✔	
Metals : Metals in Soil/Solid by CRC ICPMS (<355 µm)											
Glass soil jar/Teflon lined cap [ON MECP] GP05-S05	E440C	22-Aug-2023	28-Aug-2023	180 days	6 days	✔	28-Aug-2023	180 days	6 days	✔	
Metals : Metals in Soil/Solid by CRC ICPMS (<355 µm)											
Glass soil jar/Teflon lined cap [ON MECP] GP06-S06	E440C	22-Aug-2023	28-Aug-2023	180 days	6 days	✔	28-Aug-2023	180 days	6 days	✔	



Matrix: **Soil/Solid**

Evaluation: ✖ = Holding time exceedance ; ✔ = Within Holding Time

Analyte Group Container / Client Sample ID(s)	Method	Sampling Date	Extraction / Preparation				Analysis				
			Preparation Date	Holding Times		Eval	Analysis Date	Holding Times		Eval	
				Rec	Actual			Rec	Actual		
Metals : Metals in Soil/Solid by CRC ICPMS (<355 µm)											
Glass soil jar/Teflon lined cap [ON MECP] GP07-S07	E440C	22-Aug-2023	28-Aug-2023	180 days	6 days	✔	28-Aug-2023	180 days	6 days	✔	
Metals : Metals in Soil/Solid by CRC ICPMS (<355 µm)											
Glass soil jar/Teflon lined cap [ON MECP] GP08-S08	E440C	22-Aug-2023	28-Aug-2023	180 days	6 days	✔	28-Aug-2023	180 days	6 days	✔	
Metals : Metals in Soil/Solid by CRC ICPMS (<355 µm)											
Glass soil jar/Teflon lined cap [ON MECP] GP11 -S11	E440C	22-Aug-2023	28-Aug-2023	180 days	6 days	✔	28-Aug-2023	180 days	6 days	✔	
Metals : Metals in Soil/Solid by CRC ICPMS (<355 µm)											
Glass soil jar/Teflon lined cap [ON MECP] GP12-S12	E440C	22-Aug-2023	28-Aug-2023	180 days	6 days	✔	28-Aug-2023	180 days	6 days	✔	
Metals : Metals in Soil/Solid by CRC ICPMS (<355 µm)											
Glass soil jar/Teflon lined cap [ON MECP] GP13-S13	E440C	22-Aug-2023	28-Aug-2023	180 days	6 days	✔	28-Aug-2023	180 days	6 days	✔	
Metals : Metals in Soil/Solid by CRC ICPMS (<355 µm)											
Glass soil jar/Teflon lined cap [ON MECP] GP20-S20	E440C	22-Aug-2023	28-Aug-2023	180 days	6 days	✔	28-Aug-2023	180 days	6 days	✔	

Legend & Qualifier Definitions

Rec. HT: ALS recommended hold time (see units).



Quality Control Parameter Frequency Compliance

The following report summarizes the frequency of laboratory QC samples analyzed within the analytical batches (QC lots) in which the submitted samples were processed. The actual frequency should be greater than or equal to the expected frequency.

Matrix: **Soil/Solid**

Evaluation: ✖ = QC frequency outside specification; ✔ = QC frequency within specification.

Quality Control Sample Type	Method	QC Lot #	Count		Frequency (%)		
			QC	Regular	Actual	Expected	Evaluation
Analytical Methods							
Laboratory Duplicates (DUP)							
Metals in Soil/Solid by CRC ICPMS (<355 µm)	E440C	1101470	2	36	5.5	5.0	✔
Laboratory Control Samples (LCS)							
Metals in Soil/Solid by CRC ICPMS (<355 µm)	E440C	1101470	4	36	11.1	10.0	✔
Method Blanks (MB)							
Metals in Soil/Solid by CRC ICPMS (<355 µm)	E440C	1101470	2	36	5.5	5.0	✔



Methodology References and Summaries

The analytical methods used by ALS are developed using internationally recognized reference methods (where available), such as those published by US EPA, APHA Standard Methods, ASTM, ISO, Environment Canada, BC MOE, and Ontario MOE. Reference methods may incorporate modifications to improve performance (indicated by "mod").

<i>Analytical Methods</i>	<i>Method / Lab</i>	<i>Matrix</i>	<i>Method Reference</i>	<i>Method Descriptions</i>
Metals in Soil/Solid by CRC ICPMS (<355 µm)	E440C ALS Environmental - Waterloo	Soil/Solid	EPA 6020B (mod)	<p>This method is intended to liberate metals that may be environmentally available. Samples are dried, then sieved through a 355 µm sieve, and digested with HNO₃ and HCl.</p> <p>Dependent on sample matrix, some metals may be only partially recovered, including Al, Ba, Be, Cr, Sr, Ti, Tl, V, W, and Zr. Silicate minerals are not solubilized. Volatile forms of sulfur (including sulfide) may not be captured, as they may be lost during sampling, storage, or digestion. This method does not adequately recover elemental sulfur, and is unsuitable for assessment of elemental sulfur standards or guidelines.</p> <p>Analysis is by Collision/Reaction Cell ICPMS.</p>
<i>Preparation Methods</i>	<i>Method / Lab</i>	<i>Matrix</i>	<i>Method Reference</i>	<i>Method Descriptions</i>
Digestion for Metals and Mercury	EP440 ALS Environmental - Waterloo	Soil/Solid	EPA 200.2 (mod)	<p>Samples are dried, then sieved through a 2 mm sieve, and digested with HNO₃ and HCl. This method is intended to liberate metals that may be environmentally available.</p>
Digestion for Metals and Mercury (355 µm Sieve)	EP440C ALS Environmental - Waterloo	Soil/Solid	EPA 200.2 (mod)	<p>Samples are sieved through a 355 µm sieve, and digested with HNO₃ and HCl. This method is intended to liberate metals that may be environmentally available.</p>

QUALITY CONTROL REPORT

Work Order : **WT2326349**
Amendment : **1**
Client : Englobe Corp.
Contact : Brian Schuyler
Address : 605 Hewitson St
 Thunder Bay ON Canada P7B5V5
Telephone :
Project : 2305778
PO : ----
C-O-C number : ----
Sampler : Client 1 877 300 4800
Site : ----
Quote number : Standing Offer 2023
No. of samples received : 13
No. of samples analysed : 13

Page : 1 of 4
Laboratory : ALS Environmental - Waterloo
Account Manager : Christine Paradis
Address : 60 Northland Road, Unit 1
 Waterloo, Ontario Canada N2V 2B8
Telephone : +1 519 886 6910
Date Samples Received : 23-Aug-2023 10:25
Date Analysis Commenced : 25-Aug-2023
Issue Date : 30-Aug-2023 10:21

This report supersedes any previous report(s) with this reference. Results apply to the sample(s) as submitted. This document shall not be reproduced, except in full.

This Quality Control Report contains the following information:

- Laboratory Duplicate (DUP) Report; Relative Percent Difference (RPD) and Data Quality Objectives
- Reference Material (RM) Report; Recovery and Data Quality Objectives
- Method Blank (MB) Report; Recovery and Data Quality Objectives
- Laboratory Control Sample (LCS) Report; Recovery and Data Quality Objectives

Signatories

This document has been electronically signed by the authorized signatories below. Electronic signing is conducted in accordance with US FDA 21 CFR Part 11.

<i>Signatories</i>	<i>Position</i>	<i>Laboratory Department</i>
Greg Pokocky	Manager - Inorganics	Waterloo Metals, Waterloo, Ontario



General Comments

The ALS Quality Control (QC) report is optionally provided to ALS clients upon request. ALS test methods include comprehensive QC checks with every analysis to ensure our high standards of quality are met. Each QC result has a known or expected target value, which is compared against predetermined Data Quality Objectives (DQOs) to provide confidence in the accuracy of associated test results. This report contains detailed results for all QC results applicable to this sample submission. Please refer to the ALS Quality Control Interpretation report (QCI) for applicable method references and methodology summaries.

Key :

- Anonymous = Refers to samples which are not part of this work order, but which formed part of the QC process lot.
- CAS Number = Chemical Abstracts Service number is a unique identifier assigned to discrete substances.
- DQO = Data Quality Objective.
- LOR = Limit of Reporting (detection limit).
- RPD = Relative Percent Difference
- # = Indicates a QC result that did not meet the ALS DQO.

Workorder Comments

Holding times are displayed as "---" if no guidance exists from CCME, Canadian provinces, or broadly recognized international references.

Laboratory Duplicate (DUP) Report

A Laboratory Duplicate (DUP) is a randomly selected intralaboratory replicate sample. Laboratory Duplicates provide information regarding method precision and sample heterogeneity. ALS DQOs for Laboratory Duplicates are expressed as test-specific limits for Relative Percent Difference (RPD), or as an absolute difference limit of 2 times the LOR for low concentration duplicates within ~ 4-10 times the LOR (cut-off is test-specific).

Sub-Matrix: **Soil/Solid**

					Laboratory Duplicate (DUP) Report						
Laboratory sample ID	Client sample ID	Analyte	CAS Number	Method	LOR	Unit	Original Result	Duplicate Result	RPD(%) or Difference	Duplicate Limits	Qualifier
Metals (QC Lot: 1101470)											
TY2308311-009	Anonymous	Beryllium	7440-41-7	E440C	0.10	mg/kg	0.25	0.26	0.005	Diff <2x LOR	----
		Uranium	7440-61-1	E440C	0.050	mg/kg	0.516	0.456	12.3%	30%	----
Metals (QC Lot: 1101679)											
TY2307622-041	Anonymous	Beryllium	7440-41-7	E440C	0.10	mg/kg	0.32	0.32	0.010	Diff <2x LOR	----
		Uranium	7440-61-1	E440C	0.050	mg/kg	0.742	0.703	5.45%	30%	----



Method Blank (MB) Report

A Method Blank is an analyte-free matrix that undergoes sample processing identical to that carried out for test samples. Method Blank results are used to monitor and control for potential contamination from the laboratory environment and reagents. For most tests, the DQO for Method Blanks is for the result to be < LOR.

Sub-Matrix: Soil/Solid

Analyte	CAS Number	Method	LOR	Unit	Result	Qualifier
Metals (QCLot: 1101470)						
Beryllium	7440-41-7	E440C	0.1	mg/kg	<0.10	----
Uranium	7440-61-1	E440C	0.05	mg/kg	<0.050	----
Metals (QCLot: 1101679)						
Beryllium	7440-41-7	E440C	0.1	mg/kg	<0.10	----
Uranium	7440-61-1	E440C	0.05	mg/kg	<0.050	----

Laboratory Control Sample (LCS) Report

A Laboratory Control Sample (LCS) is an analyte-free matrix that has been fortified (spiked) with test analytes at known concentration and processed in an identical manner to test samples. LCS results are expressed as percent recovery, and are used to monitor and control test method accuracy and precision, independent of test sample matrix.

Sub-Matrix: Soil/Solid

Analyte	CAS Number	Method	LOR	Unit	Laboratory Control Sample (LCS) Report				
					Spike	Recovery (%)	Recovery Limits (%)		Qualifier
					Concentration	LCS	Low	High	
Metals (QCLot: 1101470)									
Beryllium	7440-41-7	E440C	0.1	mg/kg	10 mg/kg	94.3	80.0	120	----
Uranium	7440-61-1	E440C	0.05	mg/kg	0.5 mg/kg	99.9	80.0	120	----
Metals (QCLot: 1101679)									
Beryllium	7440-41-7	E440C	0.1	mg/kg	10 mg/kg	95.6	80.0	120	----
Uranium	7440-61-1	E440C	0.05	mg/kg	0.5 mg/kg	88.8	80.0	120	----



Reference Material (RM) Report

A Reference Material (RM) is a homogenous material with known and well-established analyte concentrations. RMs are processed in an identical manner to test samples, and are used to monitor and control the accuracy and precision of a test method for a typical sample matrix. RM results are expressed as percent recovery of the target analyte concentration. RM targets may be certified target concentrations provided by the RM supplier, or may be ALS long-term mean values (for empirical test methods).

Sub-Matrix:

Laboratory sample ID	Reference Material ID	Analyte	CAS Number	Method	Reference Material (RM) Report				
					RM Target Concentration	Recovery (%) RM	Recovery Limits (%)		Qualifier
							Low	High	
Metals (QCLot: 1101470)									
	RM	Beryllium	7440-41-7	E440C	0.349 mg/kg	112	70.0	130	----
	RM	Uranium	7440-61-1	E440C	0.52 mg/kg	109	70.0	130	----
Metals (QCLot: 1101679)									
	RM	Beryllium	7440-41-7	E440C	0.349 mg/kg	94.5	70.0	130	----
	RM	Uranium	7440-61-1	E440C	0.52 mg/kg	94.5	70.0	130	----